

# ARCHITECTURE+DESIGN

A N I N D I A N J O U R N A L O F A R C H I T E C T U R E

AAMIR AND  
HAMEEDA SHARMA  
CREATING  
DRAMA  
IN REAL LIFE



ISSN 0097-0239



9 770097 023695



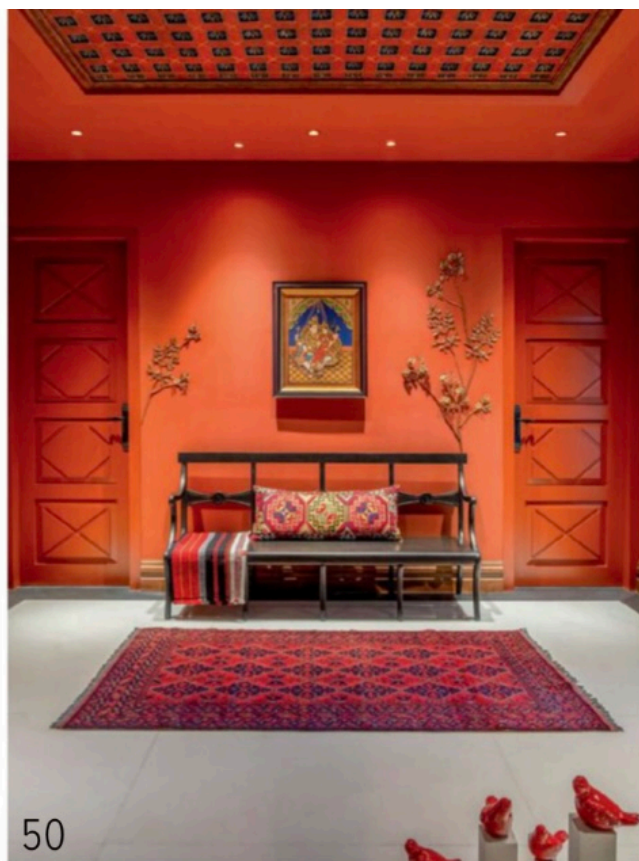
# CONTENTS

## — ARCHITECTURE+DESIGN —



36

- 56 **The Terracotta House**  
Terracotta Villa, Agra  
*Studio Archohm*
- 62 **A Colourful Makeover**  
Colour Me Happy, Home at Lodha The Park, Mumbai  
*Essajees Atelier*
- 68 **A Home For Designers By Designers**  
Treetops  
*The Works Interiors, New Delhi*
- 76 **Rustic Resonance**  
54, Avighna  
*Link BNK, Mumbai*
- ADVERTORIAL**
- 82 **Creating Biophilic Design**  
*Disha Pavers*



50



76

- TRAVELOGUE**
- 84 **Spaces, Stories, and Serendipity**  
*Mudita, The Design Village*
- VIEWPOINTS**
- 90 **The Science of Growing Forests**  
*Anjali Mangalgi*
- CONCEPT**
- 96 **A Museum of Memories**



New-Age Luxury

# A HOME FOR DESIGNERS BY DESIGNERS

**Project:** Treetops, New Delhi; **Architects:** The Works Interiors, New Delhi

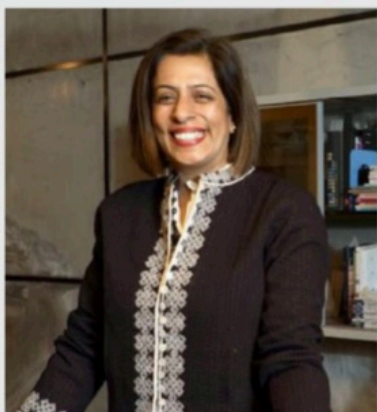
Celebrating their ideologies and aesthetics, this serene home of a designer duo play with tones and textures while incorporating elements of their passions and interests



A designer's home is one of the most challenging places to shape, even more so when there are two designers involved. Reminiscing the days when a lack of options for furniture led to the establishment of their design studio, The Works Interiors (TWI), designer duo Raj and Devika Khosla manifested their new home as an extension of their personalities and choices. Aptly called Treetops, it offers endless views of the tops of trees, while the chirping of birds seep in through the large windows and balconies.

Located on the 2nd floor of a luxurious apartment in Delhi, beside a park with lush green trees, the residence is home to a small family of three and their Golden Retriever. Carrying the narrative of their establishment and work ethos forward, and staying true to the idea of a home as a haven that radiates calmness, Treetops is handcrafted with a lot of love—for travel, the ocean, books and family—all of which emanate from various design elements in this residence.

The spatial layout of the three-bedroom home is an open plan barred from any forms of visual or physical partitions, where the furniture and decor layout demarcates the space based on functionality. The material and colour palette of the house uniquely distance themselves from any trends; the space exhibits a neutral grey palette as an ode to the vast green visuals of the outside. However, to avoid a monotonous aesthetic, it is



**DEVIKA KHOSLA**

Creative Director, The Works Interiors

*Devika Khosla is Creative Director at The Works Interiors (TWI), an award-winning bespoke interior and furniture design practice based in NCR.*

*Established in 1998 with Managing Director Raj Khosla, TWI has since been a pioneer in visionary interior design, blending rich craftsmanship and functionality to create timeless designs. With over 25 years of experience in interior design, her design sensibility seeks to push the boundary beyond conventional design and notions of luxury, towards sustainable design that stands the test of time.*







Carrying the narrative of their establishment and work ethos forward, and staying true to the idea of a home as a haven that radiates calmness, Treetops is handcrafted with a lot of love—for travel, the ocean, books and family—all of which emanate from various design elements in this residence.







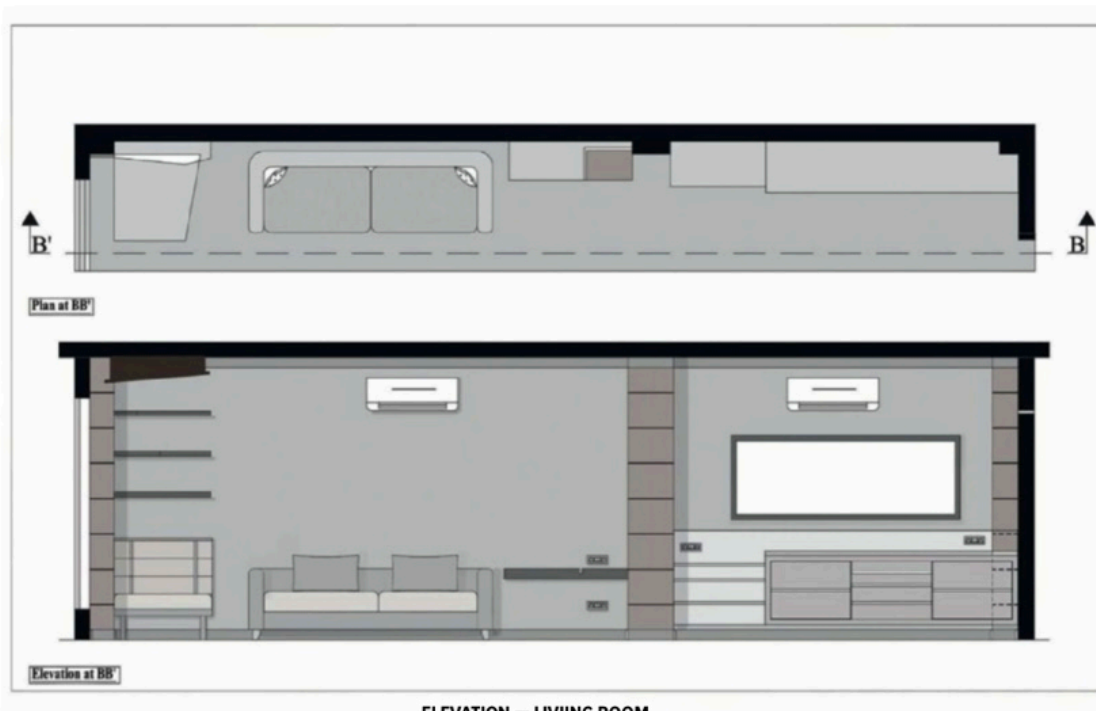
endowed with an array of textures in the same hues that manifest a dynamic space.

The living room encompasses the family area and the dining. A variety of seating arrangements in shades of the same colour pepper the living space—right from the sofa in a soft grey to the pair of lounge chairs in a deep grey. A lounging bench in a black and white houndstooth pattern adds character and dynamics to the visual palette. All the upholstery is curated from pet-friendly fabrics that ensure easy maintenance and are in accordance with the family's beloved four-legged member. Strategically positioned by the window, the bench is an ideal place to curl up with a book, enjoy a short nap or gaze at the beautiful greens. Keeping this aspect in mind, the open shelves in the back exhibit the books and memorabilia, adding another layer of personalisation to the home.

Natural materials such as wood and stone add warmth while effortlessly juxtaposing the overall tonality to build a joyous, relaxing and comfortable home. The slanted ceiling in oakwood with elegant lighting detail over the bench adds drama to the simplistic space and cleverly conceals the channels of the alluring Aztec printed curtains, which add dimension to the room and visually draw attention. Further, the television unit and the centre table in natural oakwood balance the neutrality of the space.

The conjoining dining area is a love story crafted in wood. Every piece of furniture narrates a tale while being designed with a perfect balance of aesthetics, comfort and functionality. The walls of the third bedroom converted into a walk-in closet have been broken down and replaced with sliding doors to make way for





ELEVATION — LIVING ROOM



ELEVATION — MASTER BEDROOM

The walk-in wardrobe is a luxe haven made of tall storage spaces with sliding shutters that are clad with large tinted mirrors to create an illusion of an elaborate space. Adding a pop of colour is the tropical printed wallpaper, reminiscent of the family's love for the ocean and the beach.

a spacious living and dining area. The service table adorns beautiful veneers and demonstrates exquisite craftsmanship. Interesting pieces of old spearheads are framed as art over the cabinetry.

The dining table in the form of a boomerang is designed as the focal point of the congregation, which can transform into a work-from-home desk. This unique table rests on four legs, leaving one end as a cantilever. Built in oakwood that was sustainably sourced, the table stands on stained black legs and accommodates up to six chairs. The matt melamine finish on the top retains the burnt spots in the centre of the veneer, executed such as to achieve a burnt dark grey look. The texture of the grains further accentuates the character of the oakwood table.

The walk-in wardrobe is a luxe haven made of tall storage spaces with sliding shutters that are clad with large tinted mirrors to create an illusion of an elaborate space. Adding a pop of colour is the tropical printed wallpaper, reminiscent of the family's love for the ocean and the beach. A centre island unit has customised drawers for trinkets, jewellery and other miscellaneous items, thereby exhibiting the designers' need to craft a space for minimal clutter. The sliding doors to the space have a captivating fabric sandwiched between glass panels in a signature TWI style.

The master bedroom inherits the serene theme of the home, further accentuated with a beautifully patterned wooden ceiling. The light grey palette lends a welcoming tone to a place for resting after a long day. Playing with texture in the same shade through curtains, rugs and upholstery of the headboard, the designers manifest a space that is bathed in detail yet understated. Putting the daughter's angular bedroom to the best use, the room is kept cosy by accommodating a queen-sized bed that sits adjacent to a large window. Adequate storage and a

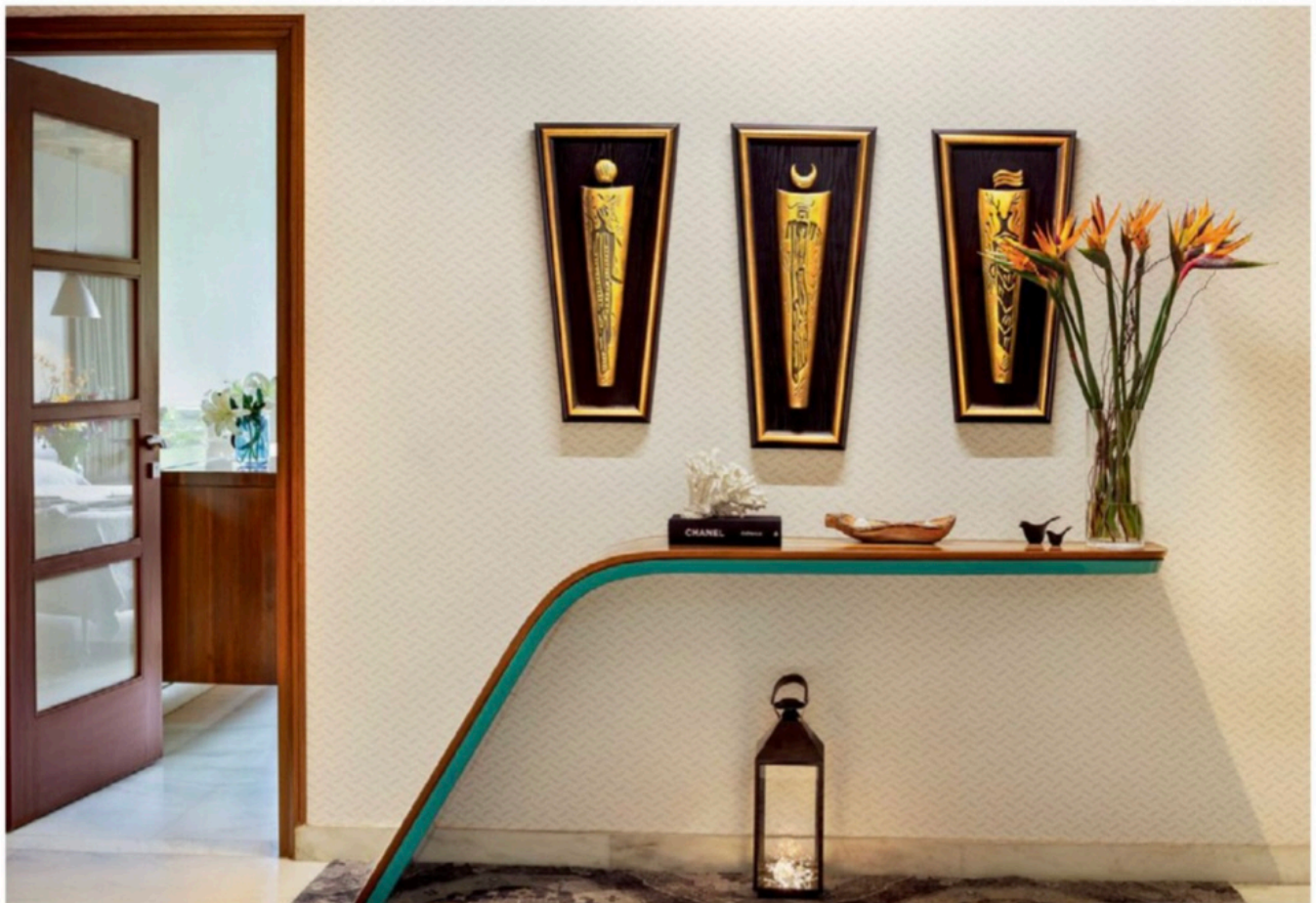








The bespoke customised console is handcrafted by adept artisans and sits fixated on a designated wall, one inch above the floor. This detail enables rugs and carpets to easily slide under it for a cohesive look. Staying conscious of the environmental impact, the timber for the console is sustainably sourced and a restored veneer is used to finish the wood.







LOOKBOOK — LIVING ROOM



LOOKBOOK — MASTER BEDROOM

bookshelf display her prized book collection.

All the furniture is bespoke, made from kiln-dried oakwood that is sourced sustainably and is handcrafted by an adept team of local artisans, showcasing the fundamental TWI ideology where every piece of furniture is realised as an heirloom piece that can be inherited by future generations. For instance, the wave console placed by the entrance is inspired by the form of waves and the surfboard. It renders the colours of the ocean into the home of a family of passionate scuba divers. The sleek shape is representative of the ups and downs of life, the sea that is strong yet calm, steady yet yielding, subtle yet beautiful, and the movement of a surfer who learns to tackle the waves without losing focus.

The bespoke customised console is handcrafted by adept artisans and sits fixated on a designated wall, one inch above the floor. This detail enables rugs and carpets to easily slide under it for a cohesive look. Staying conscious of the environmental impact, the timber for the console is sustainably sourced and a restored veneer is used to finish the wood. The materiality of this piece, the veneer and the blue underbelly are an ode to the ocean. The former with its beautiful layers and grain patterns is analogous to the waves, and the latter is a nostalgia of the turquoise of the Maldivian seas.

The home is a space where each minute detail, material and design is shaped from an understanding of the needs of the family that is to reside there, echoing the process of all TWI projects over the past two decades. +

Photo credit: Andre Fanthome, Studio NAC

## FACTFILE

**Principal Architect/Designer:** Devika & Raj Khosla

**Design Team:** The Works Interiors

**Styling:** Devika Khosla

**Site Area:** 1,800 sq ft

**Completion Date:** August 2021

